



ENSURING
equity, space and safety.

Vote
April 4

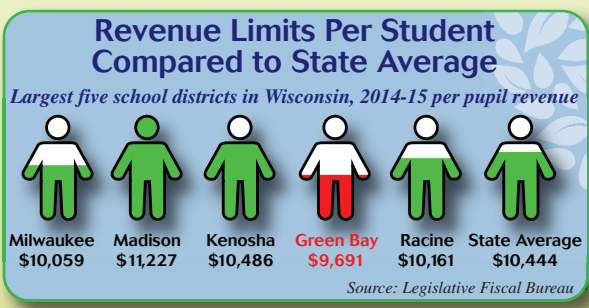
REFERENDUM

Fact Sheet

QUESTION #1

OPERATIONAL REFERENDUM: \$16.5M (10-year)

- The District is seeking \$16.5M in additional revenue above its current revenue limit
- The District's revenue limit is 7.5% or a total of \$16.5M per year below the state average
- An operational referendum allows the District to maintain educational programming and class sizes, and retain staff



Why now?

- Six years of little to no increase in the revenue limit
- Revenue has been outpaced by inflation
- \$21M in expenditures has been cut or deferred in the last two District budgets

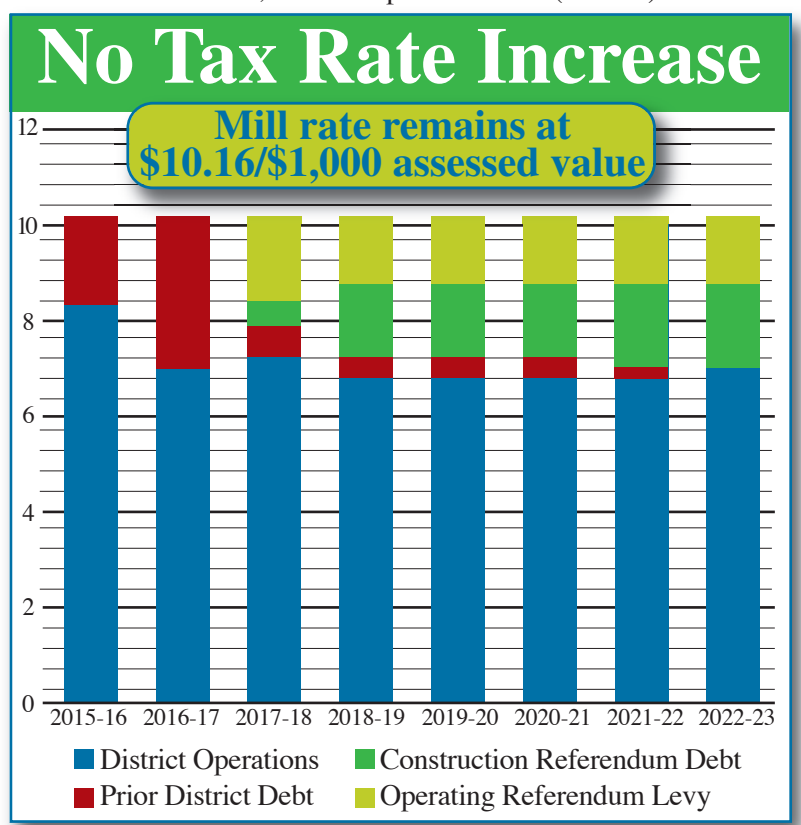
What happens if the referendum fails?

- The District will be required to cut \$18M to balance the 2017-18 budget. The District would need to do the following:
- Reduce educational programs, services and course offerings
 - Increase class sizes
 - Reduce 150 staff District-wide which will impact all employee groups



Financial Impact

The District is retiring debt from past referenda, providing an opportunity for the District to address facility needs and increase revenue to meet students' needs, with no impact to the mill (taxation) rate.



REFERENDUM

Fact Sheet



QUESTION #2

FACILITIES REFERENDUM: \$68.25M

Addressing Capacity Needs - \$51.5M



Baird Elementary School - \$25.8M
Construct a new 4K-5th grade school for 600 students on the existing Baird site



Danz Elementary School - \$2.4M
Construct an addition to increase the capacity to 565 students



Eisenhower Elementary School - \$8.4M
Construct an addition to increase the capacity to 600 students



Jackson Elementary School - \$2.7M
Construct a new secured entrance and office, new library (old library renovated into classrooms for expanding Spanish immersion program) and new gym



Martin Elementary School - \$4.6M
Construct an addition to increase the capacity to 475 students and add a new gym



Sullivan Elementary School - \$2.6M
Construct an addition to increase the capacity to 700 students



Edison Middle School - \$3.5M
Construct a new cafeteria/kitchen and renovate the existing space into additional classrooms



Red Smith School - \$1.5M
Construct an addition to increase the capacity to 1,105 students

Safety and security needs \$5.3M

The referendum will address the remaining elementary schools that do not have secured entrances. At the following schools the District will construct secured entrances, including office renovations/additions.

- Doty • Jefferson • Keller • King • Wequiock • Wilder

Adequate and appropriate spaces \$11.45M

Community Services – The District is requesting \$2.5M to construct and renovate schools to provide adequate and appropriate spaces for community services. Currently, community partners, such as Oral Health Partners, provide services to students and their families within many of the District's school buildings.

Fine Arts Pathway – The District has developed a Fine Arts pathway that includes Webster Elementary Children's Center for Integrated Arts, Washington Middle School and the Fine Arts Institute of East High School. The District is requesting \$6.7M to renovate the three facilities to support educational programming, which has grown significantly through community investment.

Project-based Charter School – The John Dewey Academy of Learning (JDAL) is the District's project-based charter school. Currently the school is located at the former Saints Peter and Paul School on the third floor. The \$2.25M would be used to address the unique facility needs of the programming.

\$16.5M + \$68.25M

=

No Tax Rate Increase

Learn More:



Green Bay Area Public School District
Engagement. Equity. Excellence.

- Call:** 920-448-2101
- Visit:** www.gbaps.org/referendum
- Email:** communications@gbaps.org
- Attend:** Community Information Sessions



March 14, 6:30 p.m., Jackson Elementary School, 1306 S. Ridge Rd.

March 16, 6:30 p.m., Martin Elementary School, 626 Pinehurst Dr.

www.gbaps.org/referendum

VOTE on Tuesday, April 4!